




The Nature Conservancy Survey – 1999

Alachua County voters asked if they wanted to:

- Preserve lands to protect drinking water - **85% YES**
- Protect endangered plants and animals - **78% YES**
- Public access for resource-based recreation - **75% YES**



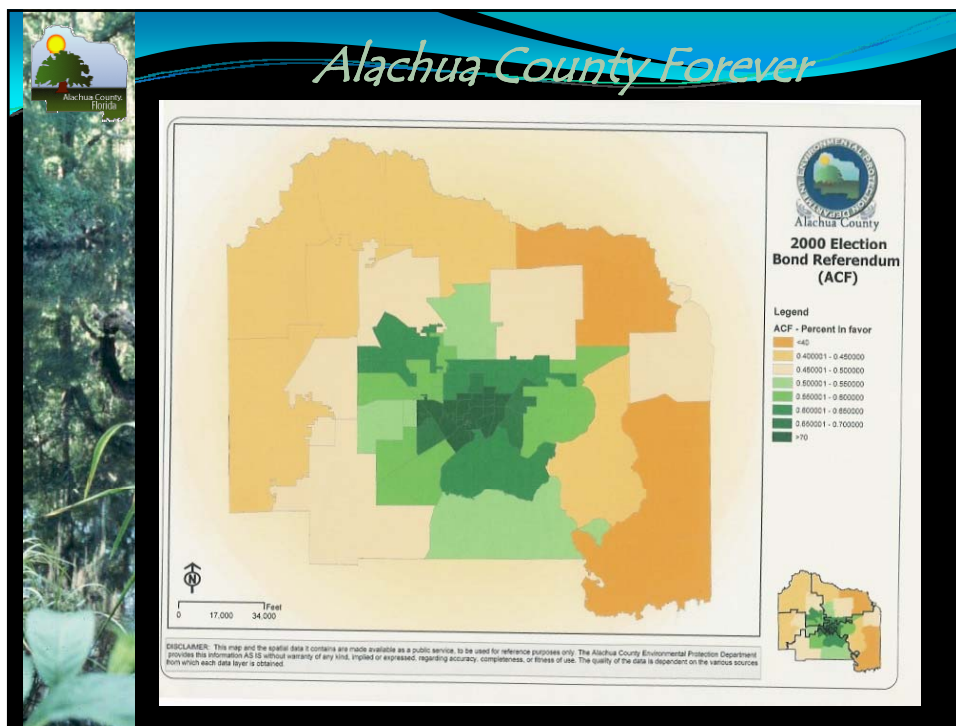
The Funding Source



- Bonds totaling \$29 million
- 0.25 mill property tax for not more than 20 years
- Offset by sunset of library capital millage of 4.16%



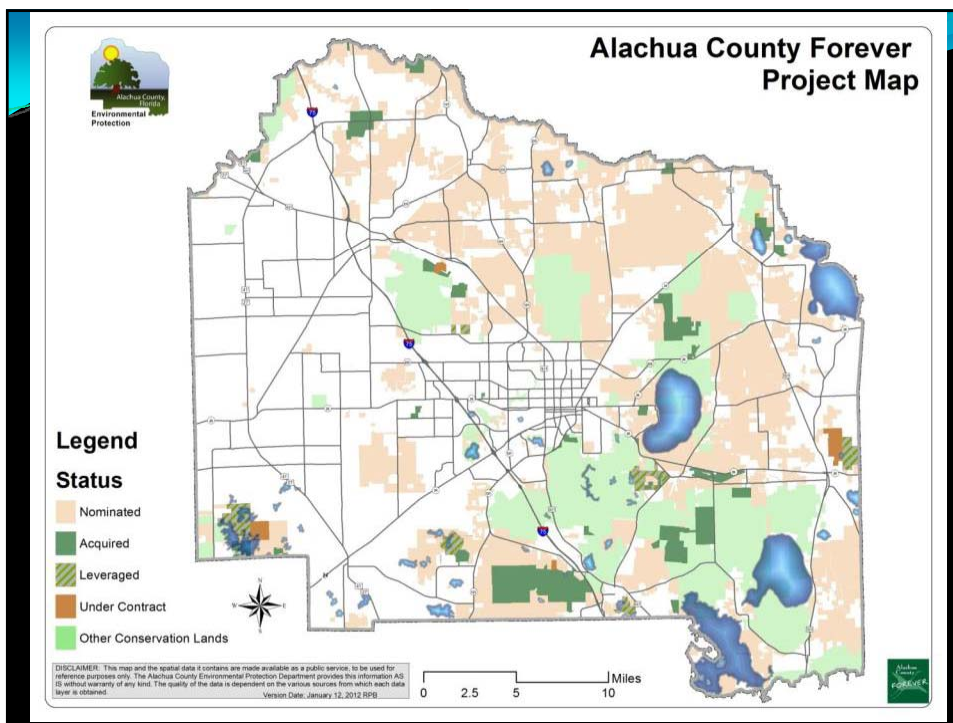
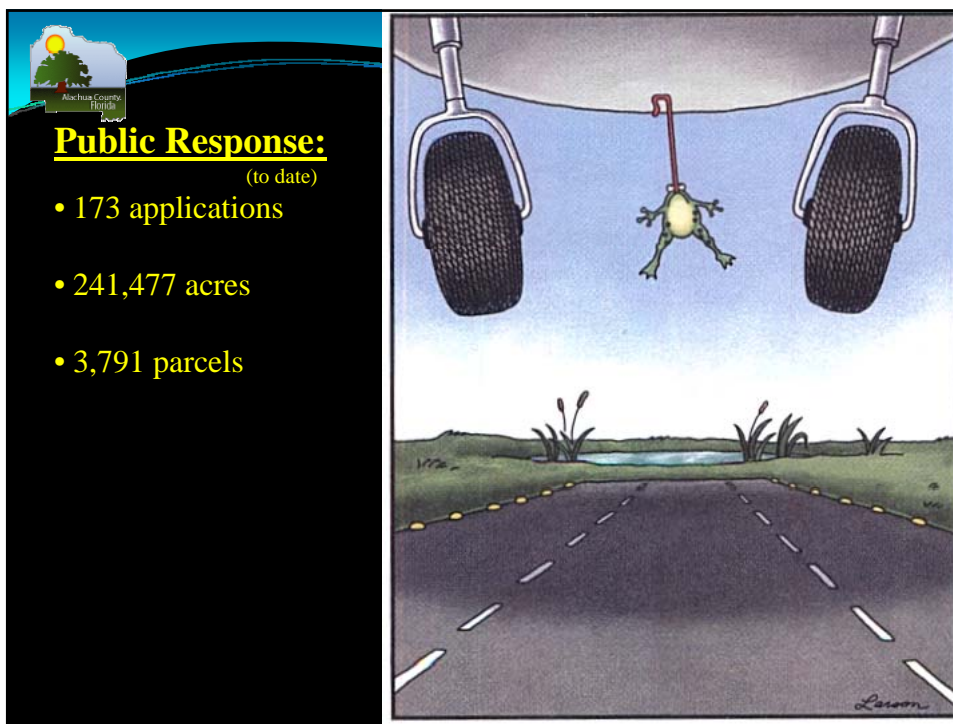
APPROVED 62.5%

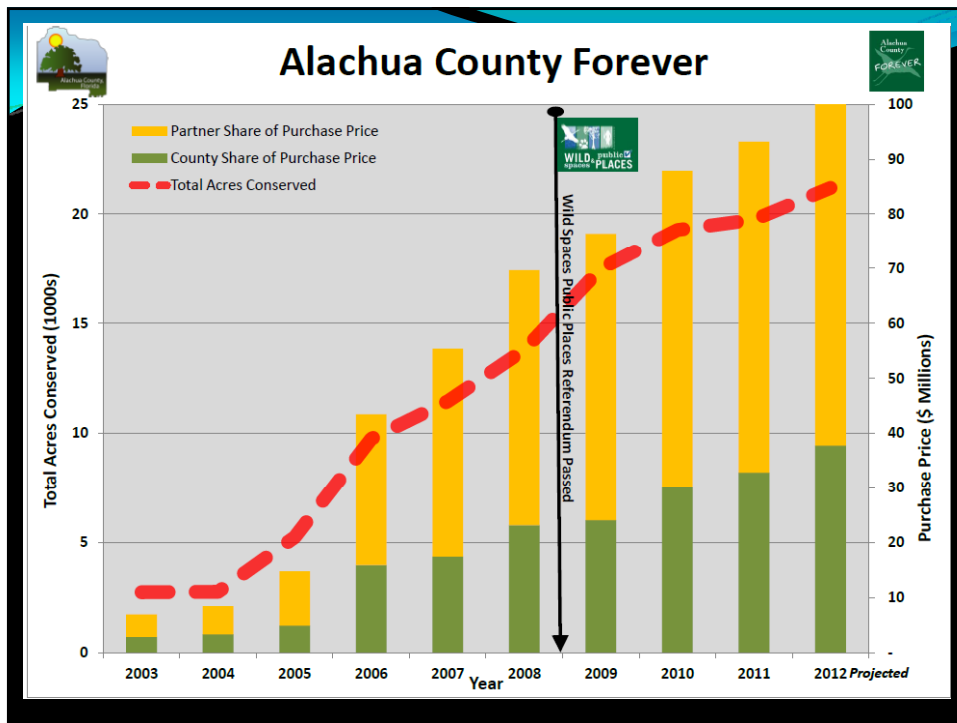
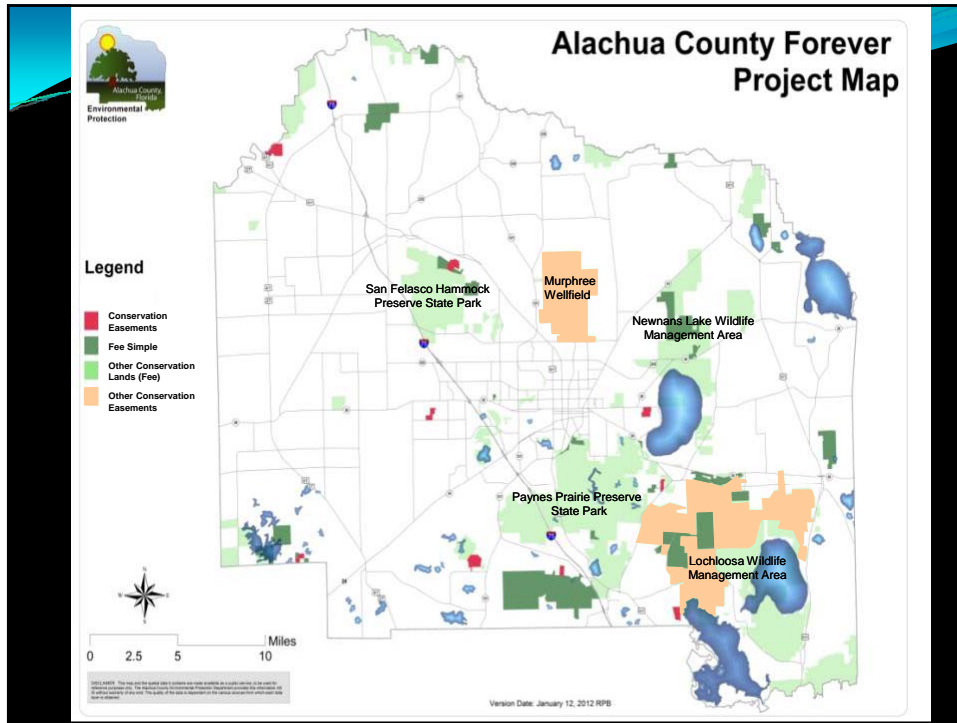


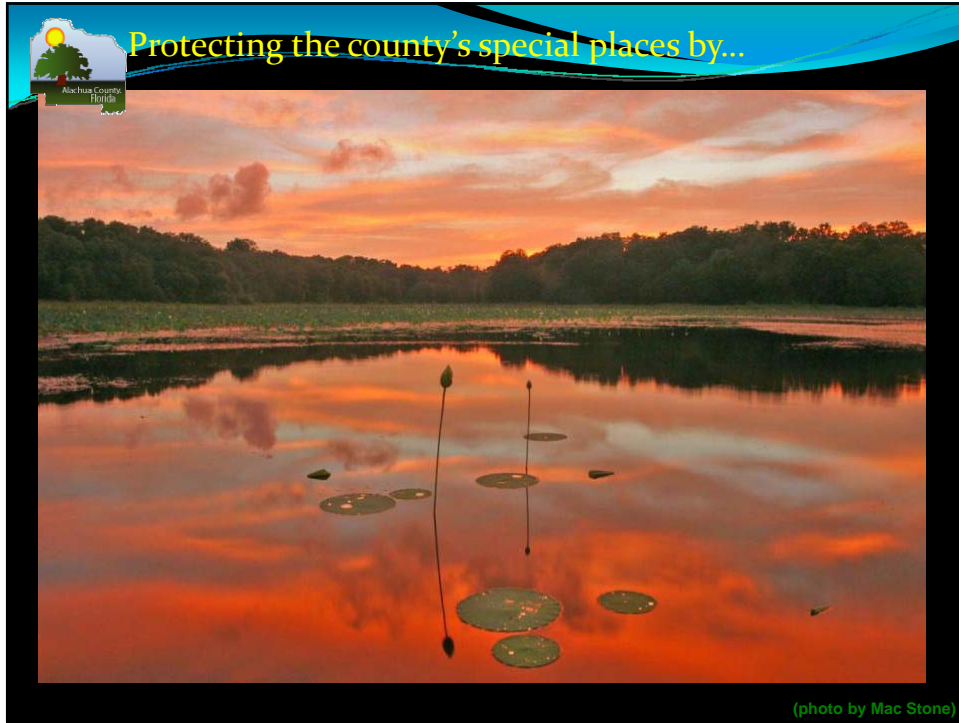
Alachua County Forever

"To acquire, protect and manage environmentally significant lands, to protect water quality and wildlife habitat, and provide areas for low-impact, resource-based recreation."

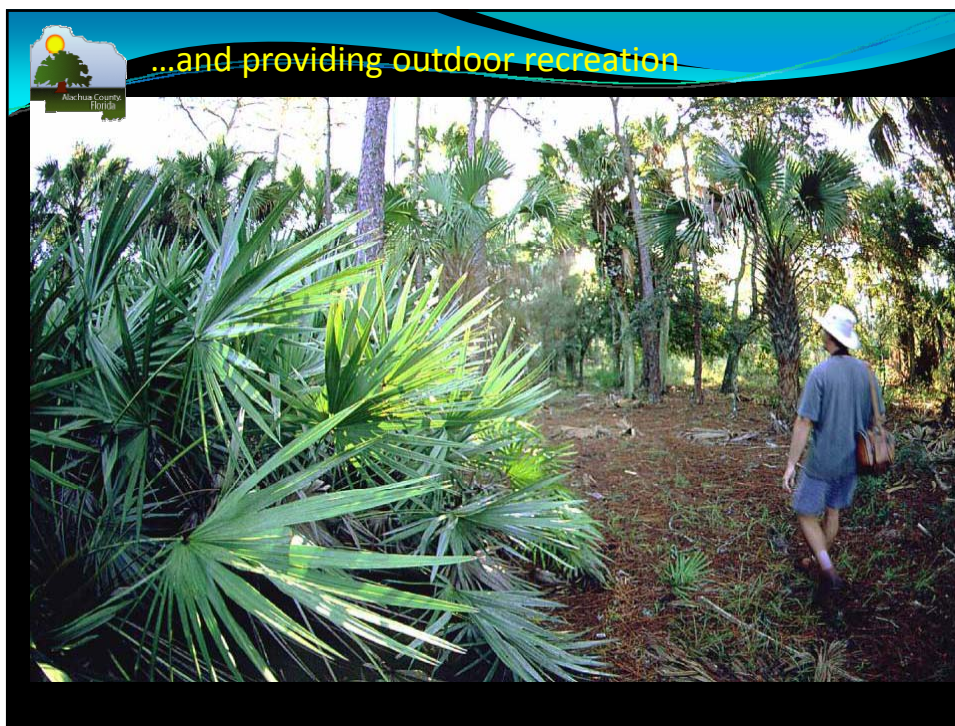
(photo by Larry Korhnak)











Stewardship Strategy

*“To acquire, **improve and manage** environmentally significant lands, to protect water quality and wildlife habitat, and provide areas for low-impact, resource-based recreation.*”

Larry Kornak

Kristin Gera

Mark Stone



Stewardship Strategy

Basic Ingredients:

- People
- Materials
- Partnerships

Results (since FY08)

- \$380,049 offset
- \$610,648 partner
- \$1.2 M total



Exotic Control





Infrastructure

(Conant 1956)

Eastern Coral Snake
(venomous)

Scarlet King Snake
(non-venomous)

"Red on yellow, kill a fellow; red on black, friend of Jack"

CREEK

© 2011 University of North Florida, Florida Forests and Parks, Inc. All Rights Reserved. Florida Forester Fund.



Cultural History




Volunteering






Recreation



Alachua County Forever

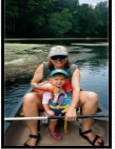
Program Summary

January 26, 2012

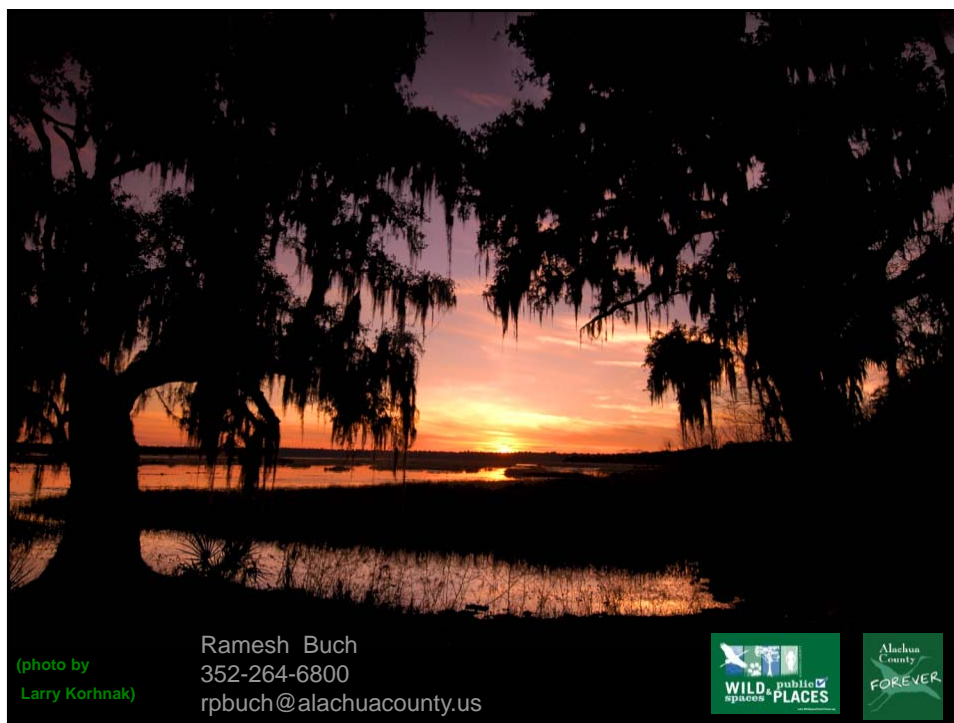
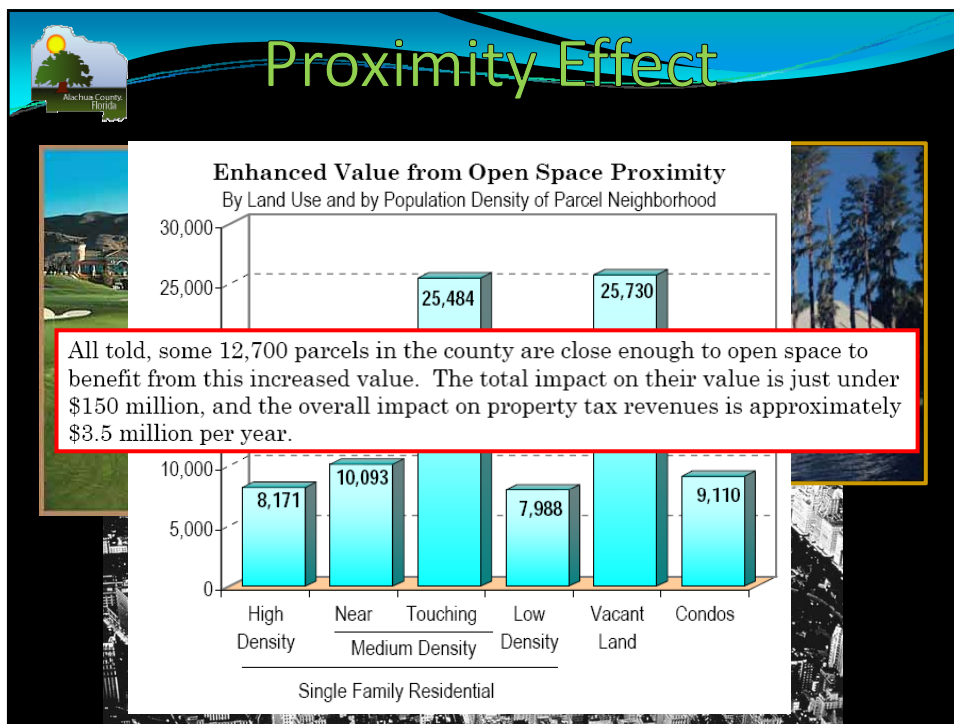


| Vital Statistics | | Alachua County Forever | Wild Spaces Public Places |
|---|------------------|------------------------|---------------------------|
| Referenda Approved | 11/7/2001 | \$29 million | 11/7/2009 \$13 million |
| Average Annual Impact: | \$ 29.92 | 20 years | \$45.00 2 years |
| First Acquisition (Mill Creek - Lybass) | 11/8/2002 | | |
| | 239,500 acres | | |
| Nominated by the Public (to date) | 169 applications | | |
| Acquisition List (Approved by the BoCC) | 53,147 acres | | |
| Protected by ACF and Partners | 19,877 acres | | |
| Remained on A List | 29,823 acres | | |
| Estimated Value * | \$ | 137,359,356 | |
| Remaining in Nomination Pool | | 186,353 acres | |
| Estimated Value * | \$ | 858,320,096 | |

*Based on past values

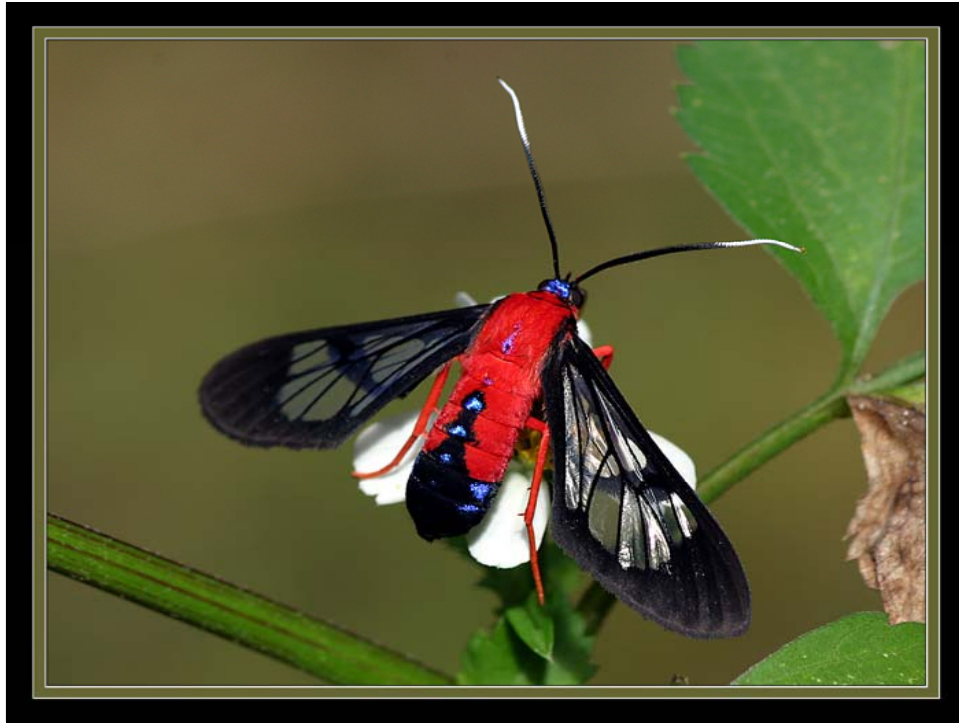


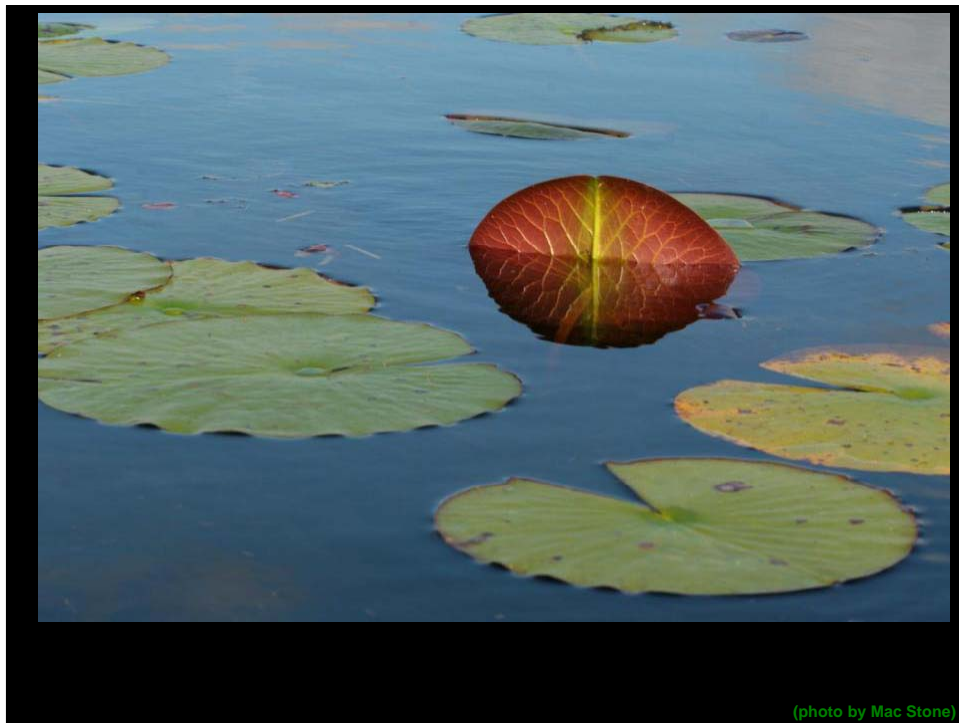
Jamie De River







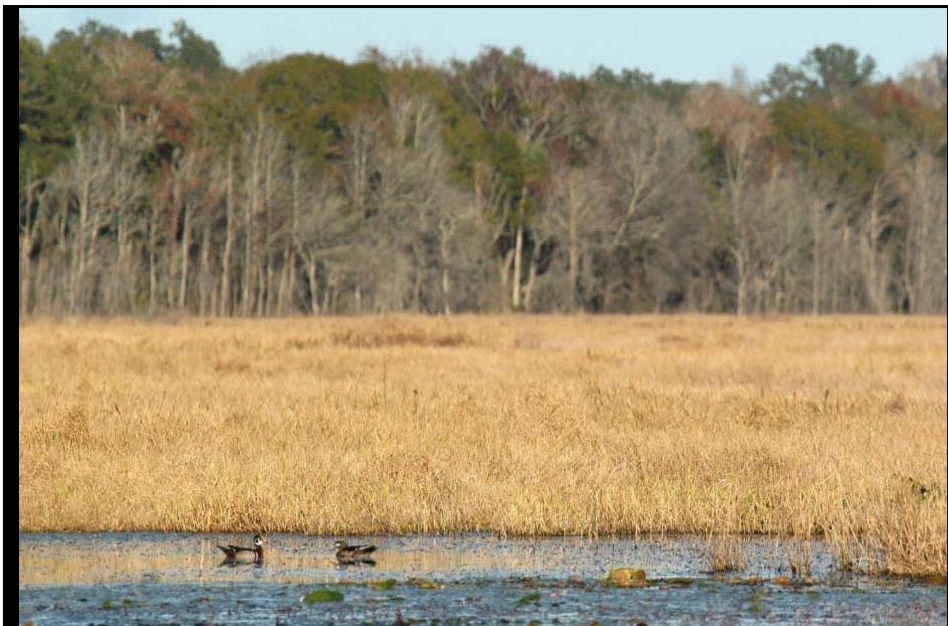




(photo by Mac Stone)



(photo by Peter NeSmith)



(photo by Larry Korhnak)





